

# DISTRICT POLICE STATION

ROTTERDAM, THE NETHERLANDS

**23**  
YEARS

**BUILT IN 1988**  
**REVISITED IN 2011**



## *About the Project*

### **ARCHITECT**

C. VAN STRIEN

### **PRODUCT**

TRESPA® METEON® UNI COLOURS



# UMC ST. RADBOUD

NIJMEGEN, THE NETHERLANDS

**24**  
YEARS

**BUILT IN 1990  
REVISITED IN 2014**



## *About the Project*

### **ARCHITECT**

FRED MEERDINK, CROONEN  
ARCHITECTEN INGENIEURS

### **PRODUCT**

TRESPA® METEON® METALLICS

TRESPA® METEON® UNI COLOURS





# CENTRE DE CALCUL UPC

BARCELONA, SPAIN

**22**  
YEARS

**BUILT IN 1991**  
**REVISITED IN 2013**



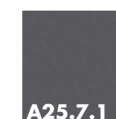
## *About the Project*

### **ARCHITECT**

JORDI FABRE

### **PRODUCT**

TRESPA® METEON® UNI COLOURS



# FACULTAD DE QUIMICA

CERDANYOLA, SPAIN

**21**  
YEARS

**BUILT IN 1992**  
**REVISITED IN 2013**



## *About the Project*

### **ARCHITECT**

JORDI FABRE

### **PRODUCT**

TRESPA® METEON® UNI COLOURS



A21.5.1

### **FIXING SYSTEM**

TS150



# IMS

ABERDEEN, UK



(the right building in 2002)

**18**  
YEARS

**BUILT IN 1996**  
**REVISITED IN 2014**



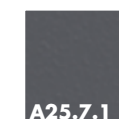
## *About the Project*

### **ARCHITECT**

DAVID MURRAY ASSOCIATES

### **PRODUCT**

TRESPA® METEON® UNI COLOURS



A25.7.1

### **FIXING SYSTEM**

TS700

# NAVE TERRAPILAR

MURCIA, SPAIN

**17**  
YEARS

**BUILT IN 1996**  
**REVISITED IN 2013**



## *About the Project*

### **PRODUCT**

TRESPA® METEON® METALLICS



M51.0.1

### **FIXING SYSTEM**

TS200



# USINE FENWICK

ELANCOURT, FRANCE

**20**  
**YEARS**

**BUILT IN 1994**  
**REVISITED IN 2014**



## *About the Project*

### **ARCHITECT**

DAMON & PLET ARCHITECTES

### **PRODUCT**

TRESPA® METEON® UNI COLOURS



### **FIXING SYSTEM**

TS300

# LOGEMENTS RUE GANDON

GANDON, FRANCE

**19**  
YEARS

**BUILT IN 1995**  
**REVISITED IN 2014**



## *About the Project*

### **ARCHITECT**

ATELIER DE POINT DE JOUR

### **PRODUCT**

TRESPA® METEON® METALLICS

TRESPA® METEON® UNI COLOUR



### **FIXING SYSTEM**

TS150



# UNIVERSITAT POMPEU FABRA

BARCELONA, SPAIN

**18**  
YEARS

**BUILT IN 1995**  
**REVISITED IN 2013**



## *About the Project*

### **PRODUCT**

TRESPA® METEON® UNI COLOURS



### **FIXING SYSTEM**

TS200

# WIMBLEDON NO 1

LONDON, UK

**18**  
YEARS

**BUILT IN 1996**  
**REVISITED IN 2014**



## *About the Project*

### **ARCHITECT**

BUILDING DESIGN PARTNERSHIP

### **PRODUCT**

TRESPA® METEON® UNI COLOURS



### **FIXING SYSTEM**

TS200



# HABILLAGE GARDE CORPS

LYON, FRANCE

**16**  
YEARS

**BUILT IN 1998**  
**REVISITED IN 2014**



## *About the Project*

### **PRODUCT**

TRESPA® METEON® UNI COLOURS



### **FIXING SYSTEM**

TS300

# SPORTLINE HANDELSZAAK

ROESELARE, BELGIUM

**16**  
YEARS

**BUILT IN 1998**  
**REVISITED IN 2014**



## *About the Project*

### **ARCHITECT**

ARCH. VANASSCHE

### **PRODUCT**

TRESPA® METEON® METALLICS

TRESPA® METEON® UNI COLOURS



### **FINISH**

A20.7.2: ROCK

### **FIXING SYSTEM**

TS150



# AOK

ROSENHEIM, GERMANY

**15**  
YEARS

**BUILT IN 1999  
REVISITED IN 2014**



## *About the Project*

### **PRODUCT**

TRESPA® METEON® METALLICS



# P.T.H.I. SCHOOL

ZOTTEGEM, BELGIUM

**15**  
YEARS

**BUILT IN 1999**  
**REVISITED IN 2014**



## *About the Project*

### **PRODUCT**

TRESPA® METEON® UNI COLOURS





# SPORTHAL VOCASA

NIJMEGEN, THE NETHERLANDS

**15  
YEARS**

**BUILT IN 1999  
REVISITED IN 2014**



## *About the Project*

### **PRODUCT**

TRESPA® METEON® UNI COLOURS



### **FIXING SYSTEM**

TS150

# POLE MARINE

DUNKERQUE, FRANCE

**15  
YEARS**

**BUILT IN 1999  
REVISITED IN 2014**



## *About the Project*

### **ARCHITECT**

REICHEN ET ROBERT ARCHITECTES

### **PRODUCT**

TRESPA® METEON® UNI COLOURS



### **FIXING SYSTEM**

TS700



# MASEREEL

STROMBEEK, BELGIUM

**15**  
**YEARS**

**BUILT IN 1999**  
**REVISITED IN 2014**



## *About the Project*

### **ARCHITECT**

BIESEMANS MERCHTEM

### **PRODUCT**

TRESPA® METEON® UNI COLOURS



### **FIXING SYSTEM**

TS150

# PAVILION WOMEN AND CHILDREN HOSPITAL

EVERETT, WA, USA

**12**  
YEARS

**BUILT IN 2002**  
**REVISITED IN 2014**



## *About the Project*

### **ARCHITECT**

NBBJ

### **PRODUCT**

TRESPA® METEON® PROJECT COLOR



PROJECT

### **FIXING SYSTEM**

TS110



# PANARAMIX ALICANTE

ALICANTE, SPAIN

**13**  
YEARS

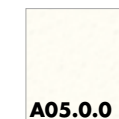
**BUILT IN 2000  
REVISITED IN 2013**



## *About the Project*

### **PRODUCT**

TRESPA® METEON® UNI COLOURS



**A05.0.0**

### **FIXING SYSTEM**

TS700

# LABO POTTEAU

HEULE, BELGIUM

**13**  
YEARS

**BUILT IN 2001  
REVISITED IN 2014**



## *About the Project*

### **ARCHITECT**

ARCHITECTENBUREAU D'HONDT

### **PRODUCT**

TRESPA® METEON® METALLICS



### **FINISH**

ROCK

### **FIXING SYSTEM**

TS200



# OFFICE BUILDING

HUNGARY

**13**  
YEARS

**BUILT IN 2001  
REVISITED IN 2014**



## *About the Project*

### **PRODUCT**

TRESPA® METEON® METALLICS



M51.0.1



M21.3.4

### **FINISH**

ROCK

# DALLA TORRE DENTAL CLINIC

STERZING, ITALY

**12**  
YEARS

**BUILT IN 2002  
REVISITED IN 2014**



## *About the Project*

### **PRODUCT**

TRESPA® METEON® UNI COLOURS



### **FINISH**

ROCK



# PICHLER

VINTL, ITALY

**11**  
**YEARS**

**BUILT IN 2003**  
**REVISITED IN 2014**



## *About the Project*

### **PRODUCT**

TRESPA® METEON® METALLICS



M21.3.4

# RESIDENCE GRETRY

FLERON, BELGIUM

**11**  
**YEARS**

**BUILT IN 2002**  
**REVISITED IN 2013**



## *About the Project*

### **ARCHITECT**

MARC BORSU

### **PRODUCT**

TRESPA® METEON® UNI COLOURS



### **FIXING SYSTEM**

TS150



# ELITE

JORDAN

**12**  
YEARS

**BUILT IN 2002**  
**REVISITED IN 2014**

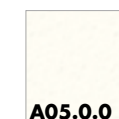


(\*Upper grey colour is not Trespa and installed later than Trespa.)

## *About the Project*

### **PRODUCT**

TRESPA® METEON® UNI COLOURS



**A05.0.0**

# POLYVALENTE ZAAL

OVERPELT, BELGIUM

**12**  
YEARS

**BUILT IN 2002**  
**REVISITED IN 2014**



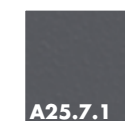
## *About the Project*

### **ARCHITECT**

KOSTEN

### **PRODUCT**

TRESPA® METEON® UNI COLOURS



### **FINISH**

ROCK

### **FIXING SYSTEM**

TS200



# ALTENWOHNHEIM

WETTER AN DER RUHR, GERMANY

**12  
YEARS**

**BUILT IN 2002  
REVISITED IN 2014**



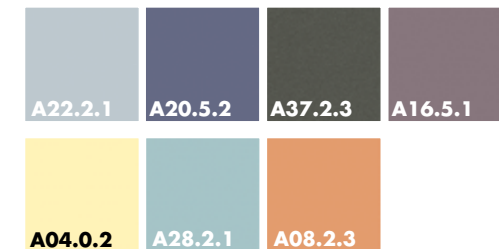
## *About the Project*

### **ARCHITECT**

HIPPENSTIEL ARCHITEKTURBÜRO

### **PRODUCT**

TRESPA® METEON® UNI COLOURS



### **FIXING SYSTEM**

TS150

# BEERENSHEUVEL

MAASMECHELEN, BELGIUM

**12**  
YEARS

**BUILT IN 2002  
REVISITED IN 2014**



## *About the Project*

### **ARCHITECT**

DIRK JACOBS

### **PRODUCT**

TRESPA® METEON® UNI COLOURS



### **FINISH**

A25.8.1: ROCK

### **FIXING SYSTEM**

TS300

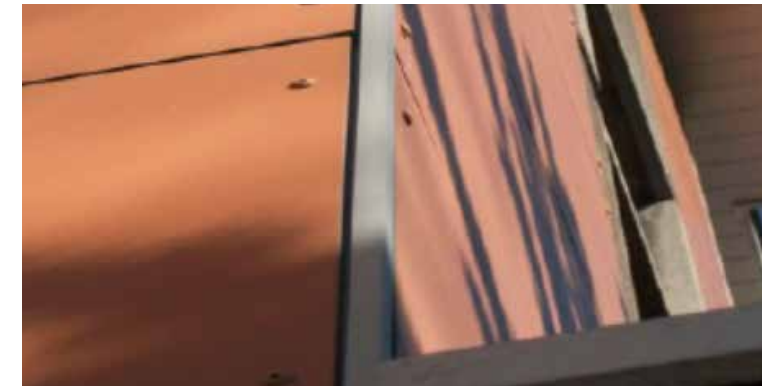


# RESIDENCE LES ROBINIERS

JEMEPPE, BELGIUM

**10**  
**YEARS**

**BUILT IN 2003**  
**REVISITED IN 2013**



## *About the Project*

### **ARCHITECT**

ATELIER L'EQUERRE

### **PRODUCT**

TRESPA® METEON® UNI COLOURS



### **FIXING SYSTEM**

TS150

# SAMIJN APARTMENT

GENT, BELGIUM

**10**  
YEARS

**BUILT IN 2004**  
**REVISITED IN 2014**



## *About the Project*

### **ARCHITECT**

DEDEURWAERDER RUDI

### **PRODUCT**

TRESPA® METEON® UNI COLOURS



A10.3.4



**ALTHOUGH TRESPA HAS CHECKED THE BUILDING YEAR TO THE BEST OF ITS KNOWLEDGE, THE ACTUAL TIMING MAY NOT BE ACCURATE.**

#### **DISCLAIMER**

Trespa does not warrant that the information in this document is suitable for the purpose for which it is consulted by the other party. This document does not contain any design, structural calculation, estimate or other warranty or representation that customers and third parties may rely on. This document does not guarantee any properties of trespa products.

Customers and third parties must have a professional adviser inform them about (the suitability of) the trespa products for all desired applications and about applicable laws and regulations. Trespa does not warrant the above. The most recent version of the current delivery programme and the material properties datasheet can be found at [www.Trespa.Info](http://www.Trespa.Info). Only the information in the most recent and valid material properties datasheet should be used to select and provide advice regarding trespa products. Trespa reserves the right to change (the specifications for) its products without prior notice.

#### **INTELLECTUAL PROPERTY**

All intellectual property rights and other rights regarding the content of this document (including logos, text and photographs) are owned by Trespa and/or its licensors. Any use of the content of this document, including distribution, reproduction, disclosure, storage in an automated data file or the dispatch of such a file without Trespa's prior written consent is explicitly prohibited. ®Trespa, Meteon, Athlon, TopLab, TopLabPLUS, TopLabECO-FIBRE, Virtuon, Izeon, Volkern, Trespa Essentials and Mystic Metallics are registered trademarks of Trespa.